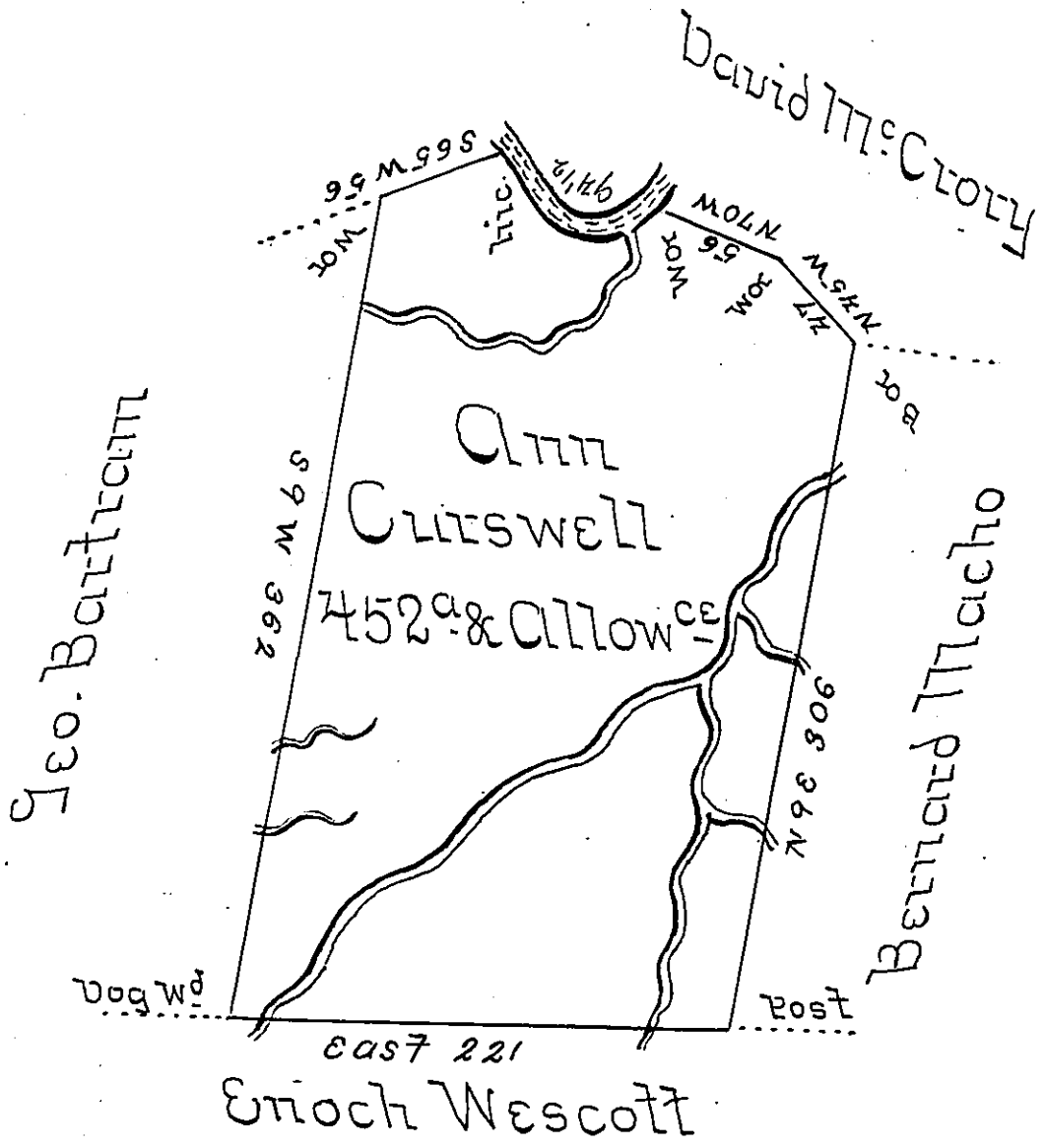


Courses & Distances
Down crooked creek

S 75 W 14
West 28
N 76 W 52 1/2
97 1/2



Survey'd to Ann Cutswell on the 14th day of Nov^r
1750. The above described tract of four hundred
& fifty two acres & allowances of six P Cent. Sit-
uate on crooked creek about eight miles from
the Kiskaminates, including Iron Ore, in
Westmoreland County By warrant of the 14th
day of July 1754.

Joshua Sider D.S.

John Wilkens Esq. Senr.

IN TESTIMONY that the above is a copy of the original remaining on file in
the Department of Internal Affairs of Pennsylvania, made
conformably to an Act of Assembly approved the 16th day of
February, 1833, I have hereunto set my Hand and caused
the Seal of said Department to be affixed at Harrisburg,
this eighteenth day of August 1904.

James P. Brown
Secretary of Internal Affairs.